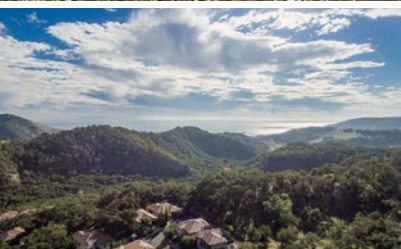


# STUNNING OCEAN VIEW AVILA HOME



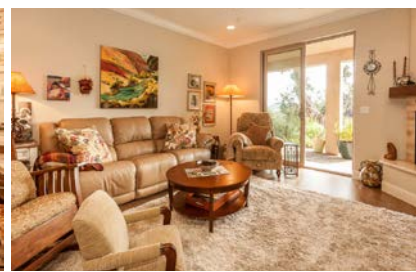
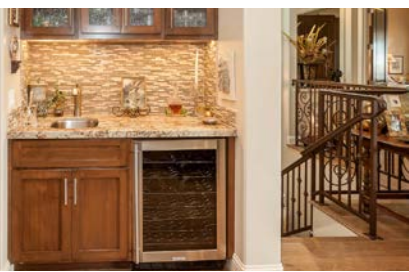
2945 CLUB MOSS LANE  
AVILA BEACH, CA 93424

OFFERED AT \$1,698,000

[WWW.THEAVENUESLO.COM/PROPERTY/2945](http://WWW.THEAVENUESLO.COM/PROPERTY/2945)



**Nestled among the Oaks in Avila Beach** & featuring the area's best microclimate, this coveted neighborhood is protected by hillsides and is south facing, it is the last place to receive fog & the first place it burns off! This lovely 2015 home sits on the best part of Club Moss Lane, with a family room, large covered deck and master bedroom suite all with views of Point Sal and the ocean. European white oak and travertine floors; alder wood cabinets & 8 ft. interior doors; granite & marble slab counter tops in kitchen and baths; Sub-Zero, Wolf & Bosch kitchen appliances; skillfully designed Del Mar floor plan with view maximization of the hills, canyon, and ocean.



## DISTINCTIVE DETAILS:

- Open floor plan with ocean and mountain views
- Large Master Suite on main floor with coveted Del Mar floorplan
- Open gourmet kitchen with Alder Cabinets, Granite Counters & Wolf Range
- Large back deck for entertaining with electric cover
- Additional family room downstairs with sliding glass doors to sun filled patio
- Private front courtyard with views of open space
- Well-appointed new home with high ceilings, doors & high end finishes

## OUTDOORS:

- San Luis Bay Estates home in Kingfisher Canyon
- Views of Point Sal from main living space
- Views of open space surrounding the home
- Oak filled neighborhood to enjoy abundant wildlife
- Minutes to Avila Beach, Pismo Beach and San Luis Obispo
- Gated community with access to golf, swim, tennis & leisure
- Over 5 miles of private hiking trails & street legal golf cart access



### AMY DAANE

Owner/REALTOR® BRE# 01902657

(805) 234 0621 CELL (805) 548 2670 OFFICE (805) 548 2671 FAX

amy@theavenueslo.com

1333 Johnson Ave, San Luis Obispo, CA 93401

[THEAVENUESLO.COM](http://THEAVENUESLO.COM)