

CHARMING HOME ON AN EXPANSIVE LOT



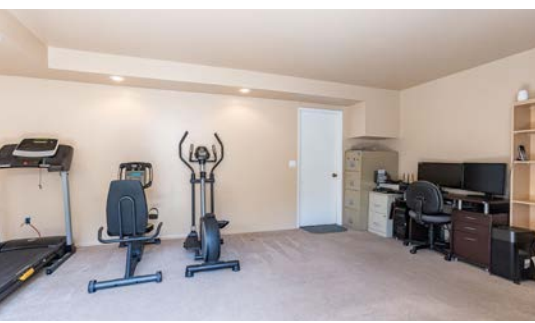
7340 PINAL AVE.
ATASCADERO, CA 93422

OFFERED AT \$650,000

THEAVENUESLO.COM/PROPERTY/7340

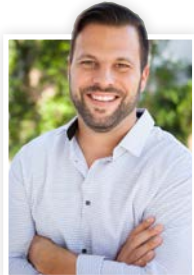


Charming, light-filled home on an expansive lot in a quiet neighborhood. You walk into this split-level home and are greeted by a great room with vaulted ceilings and elegant oak wood flooring. The kitchen includes a large island with bar seating leading to a dining area with a slider to a nice deck overlooking the backyard. Up a few stairs you find three bedrooms and 2 bathrooms, including a master suite with dual closets and an en-suite bathroom. The other two bedrooms are nice sized and share a hall bathroom with a bathtub. Downstairs is a bonus room that would make a perfect office, media room or playroom. There are several landscaped areas on this usable lot, including a beautiful Timbertech deck and a paver patio with fire pit in the backyard perfect for entertaining. Out front you have a gated RV or trailer parking area and a manicured lawn. This property oozes pride of ownership and curb appeal. It won't last long!



DISTINCTIVE DETAILS:

- Great room with vaulted ceilings and oak wood floors.
 - Kitchen has a large island with bar seating.
- Dining area leads to a deck overlooking the backyard.
- Master suite with dual closets and en-suite bathroom.
- Bonus room perfect for office, media room or playroom.
- Timber-tech back deck and paver patio with firepit in the backyard for entertaining.
 - Gated RV or trailer parking.
 - Located in a great and quiet neighborhood.



JED DAMSCHRODER

Owner/REALTOR® BRE# 01886306

(805) 550 7960 **CELL** (805) 548 2670 **OFFICE**

jed@theavenueslo.com

1333 Johnson Ave, San Luis Obispo, CA 93401

THEAVENUESLO.COM