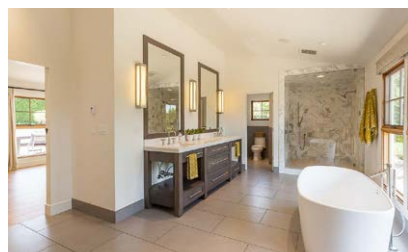




# SPECTACULAR CONTEMPORARY CALIFORNIA MASTERPIECE



340 MIRA SOL DRIVE  
SAN LUIS OBISPO, CA 93405

OFFERED AT \$2,498,000

[WWW.THEAVENUESLO.COM/PROPERTY/340](http://WWW.THEAVENUESLO.COM/PROPERTY/340)



**Enter through the private courtyard** of this spectacular Ferrini Heights single level home and get ready to experience high-end contemporary California living at it's very best. Perched at the base of coveted Bishop's Peak and designed by its owners who are professionals in interior design and landscape architecture, this home was completely renovated and expanded with the very best custom features for effortless entertaining that compliments its outstanding views. The open floor plan encompasses a chef's kitchen with Thermador appliances, living room with gas fireplace, and an open dining room with expansive doors to the backyard oasis. The family room features custom reclaimed barn doors that can be closed for privacy. The master suite offers a spa-like retreat with a large soaking tub, steam shower with dual heads and double walk-in closets. The 3 additional bedrooms are generously sized with custom closet systems. The lushly landscaped grounds of this property are truly the showcase, with numerous resort-style amenities including a swimming pool with built in spa, bocce ball court with stadium seating, poured concrete fireplace, and a vintage Airstream that can be used for a multitude of purposes - art studio, yoga retreat or the perfect playhouse. Designed with hedges for privacy, California inspired drought tolerant plants, several fruit trees, and additional Boat/RV space. So seldom does a rare turn-key property of this quality and design become available in SLO.





## DISTINCTIVE DETAILS:

- Aluminum clad with doug fir vertical grain Hurd windows & doors
- Barn doors & wrapped beams made with salvaged wood from Trebeck Farm in Paso Robles
- Wide plank Italian white oak flooring
- 5-zone hydronic radiant heating throughout
- Vaulted ceilings throughout
- Gourmet kitchen with Thermador appliances & instant hot water
- Immense views of Bishop's Peak, Cerro San Luis & Cuesta Grade

## OUTDOORS:

- Custom exterior living spaces designed & built by locally renowned landscape architect Fortini Landscapes
- Powder-coated steel and salvaged wood rolling gate to private front courtyard with bubbling fountain & agave garden
- 1400 square foot 2x8 tight-knot cedar deck in backyard
- Beach entry grey plaster pool with in-ground hot tub & electric cover
- Poured in place concrete gas fire pit
- Amphitheater staircase to backyard lighted bocci ball court
- 1965 AIRSTREAM Flying Cloud outdoor lounge, featuring new glass doors, tile flooring, lpe bench and custom wood paneling



**CHRIS ENGELSKIRGER**

Owner/Broker BRE#01905844

(805) 235 2070 **CELL**  
(805) 548 2670 **OFFICE**  
chris@theavenueslo.com  
1333 Johnson Ave, SLO, CA 93401

**THEAVENUESLO.COM**



**AMY DAANE**

Owner/REALTOR® BRE# 01902657

(805) 234 0621 **CELL**  
(805) 548 2670 **OFFICE**  
amy@theavenueslo.com  
1333 Johnson Ave, SLO, CA 93401

**THEAVENUESLO.COM**